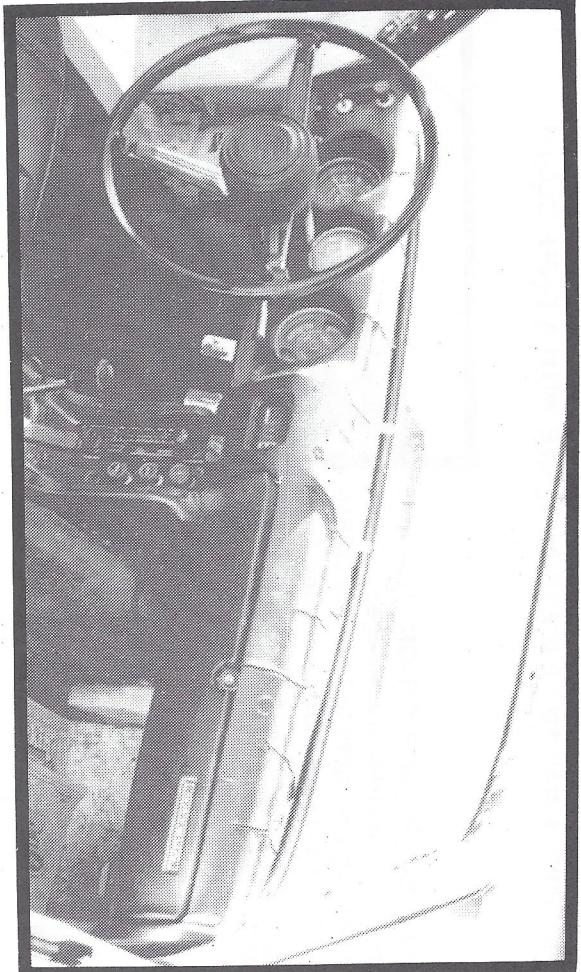
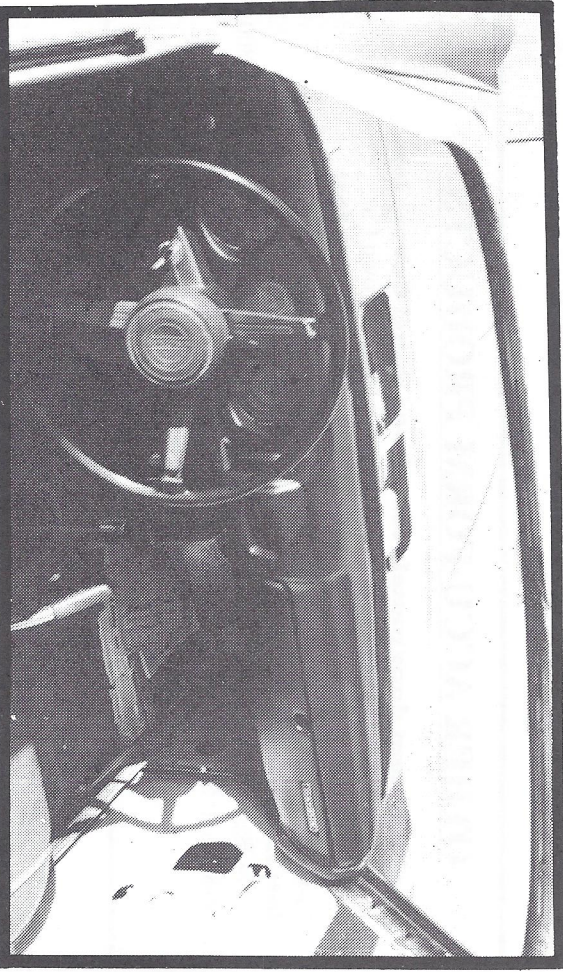


## TYPICAL APPLICATIONS

**BEFORE** Who would want to buy a car that looked like this?



**AFTER** What a difference! There's more work to do, but the new DASH-CAP is a huge step in the right direction.



## DASH-CAP™ INSTALLATION INSTRUCTIONS

**Congratulations!** You have just purchased a unique product which if properly installed and cared for will look great for many years.

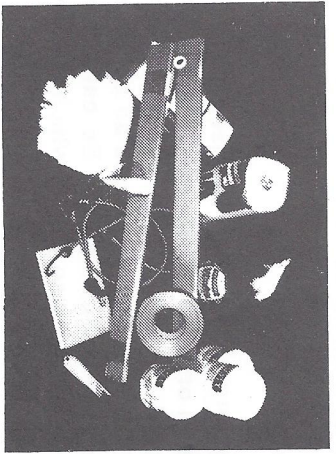
Please read and follow the Installation Instructions very carefully, especially #6 about where to apply the silicone.

And one other quick caution: Everything expands when heated, including our special plastic, so it's a good idea to park your vehicle so the sun doesn't roast your DASH-CAP™, your steering wheel or you.

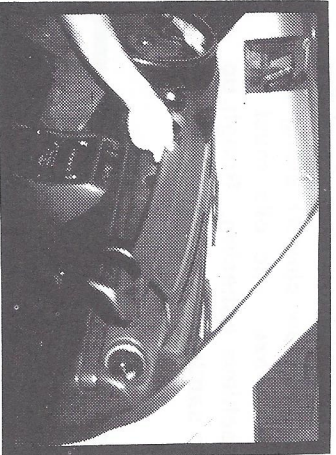
We're sure you'll enjoy your new DASH-CAP™, and we hope you'll tell your friends. Thanks for using ACCU-FORM.

### 1. TOOLS AND MATERIALS REQUIRED:

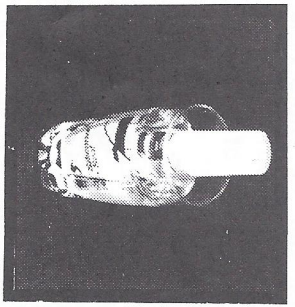
Utility knife, rubbing alcohol or ammonia based window cleaner, clean rags, 3 or 4 rolls of paper towels or bathroom paper, medium grit sandpaper, cardboard strips for wedges, screw drivers, duct tape or masking tape, wads of newspaper. Elastic type "Bunjif-Cords" may also be useful.



**2. PRE-FIT THE DASH-CAP:** Now is the time to try your new DASH-CAP on the vehicle to make sure you have the correct model. Push it firmly into place. Does it fit properly? Does the glove box open OK?



**3. WARM UP THE ADHESIVE:** Place the tube of silicone adhesive (which was packed with your DASH-CAP) in a glass of hot water. This will soften the adhesive and make it flow easier.



**SPECIAL ATTENTION REQUIRED:**

Some vehicles require special attention prior to installation of the DASH-CAP™:

- 301/302/303/303D/311/1101 Remove defroster pan (Phillips Screw Driver)
- 308 - Reduce width of glove box door approx. 1/8", sandpaper or file.
- 406 - Remove defroster pan (flexible screwdriver)
- 708/709/705 - Remove climate sensor
- 1003 - Remove radio speaker grill (pry with straight edge screwdriver).
- Most Mercedes - Remove climate sensor air inlet sleeve by prying up with a sharp screwdriver, and there are more - please call us if you need advice

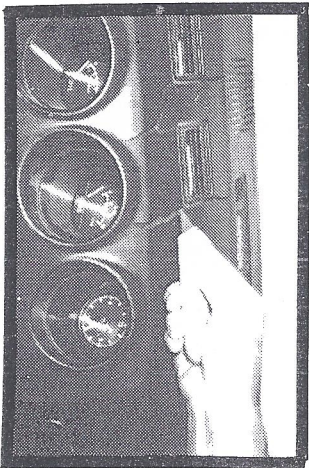
**NOTE:** In most states the vehicle serial (VIN) numbers must be visible

and you will usually find an opening for this in the DASH-CAP, but on certain vehicles the location varies and you need to cut an opening in the cap using a sharp utility knife. Be careful.

**SPECIAL NOTE:** It is essential that

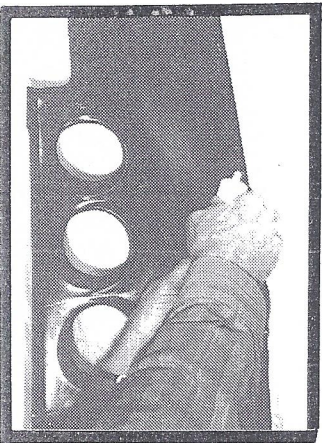
your DASH-CAP be installed while the vehicle is shaded from direct sunlight and in moderate air temperature. A clean and well vented work area is recommended. Please read and observe application and caution labels on cleaning and adhesive products used to install your DASH-CAP

**4. HIGH SPOTS:** Trim raised areas (if any) on the original dash with a utility knife as needed in order for the DASH-CAP to fit as close as possible on the original dash. Be careful to trim only those areas which will be covered by the DASH-CAP. Test fit again.



**5. SURFACE PREP.:** Clean the dashboard and the underside of the DASH-CAP with alcohol or ammonia type window cleaner along the outside edges and around the vents. All waxes and oils must be removed from both surfaces in order to achieve adhesion. Rough up both surfaces (at adhesive area only) with sandpaper.

**6. APPLY ADHESIVE:** Apply the adhesive to the underside of the DASH-CAP around the perimeters of air vents, and the entire outer edge only. The adhesive "bead" should be about the size of a pencil and approximately 1/2" away from any edge. **IMPORTANT: APPLY SILICONE ONLY NEAR OUTER EDGES AND AROUND VENTS. APPLICATION OF ADHESIVE IN ANY OTHER LOCATION CAN CAUSE CRACKING AND/OR**

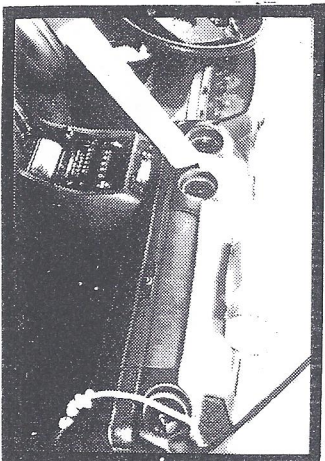


**7. INSTALL THE DASH-CAP:** Place the DASH-CAP over the original dash. Push carefully and evenly in order to seat the DASH-CAP and spread the adhesive evenly, near the edges only.

**8. REPLACE ANY ACCESSORIES:** Replace any previously removed pans, grills or accessories.

**9. WIPE AWAY ANY EXCESS ADHESIVE WITH A DAMP CLOTH.**

**10. SECURE IN POSITION:** Use rolls of paper, cardboard wedges, elastic cords and weights to hold the DASH-CAP firmly in position as needed for at least 4 hours to allow the adhesive to set and cure.



**11. UNCLAMP AND CLEAN:** When adhesive is cured remove clamping items and peel away any excess adhesive which may be showing.

**12. MAINTENANCE:** Mild car care products such as window cleaner or soap and water can be used to clean your DASH-CAP (if necessary).

**13. CONCLUSION:** DASH-CAPS are easy to install, but special problems can and do arise. Should you need help don't hesitate to contact your local dealer or call the manufacturer listed below. Thank you for using DASH-CAP™.

## OTHER ACCU-FORM PRODUCTS

- |                                     |   |
|-------------------------------------|---|
| <b>Replacement door panels for:</b> | <b>Door Panel Covers for:</b>           |
| 73-86 Ford F Series P. U.           | 83-89 Lincoln Town Car                  |
| 78-86 Bronco                        | <b>Arm Rest Covers for:</b>             |
| 73-87 Chev. & GMC                   | 73-84 Ford Trucks & Broncos             |
| <b>Interior Panels:</b>             | 73-87 Chevy & GMC Trucks                |
| 70-74 Barracuda & Challenger        | Buick, Oldsmobile, Cadillac, Volvo 1800 |
| 68-85 Fiat Spider 124 & 2000        | <b>Console Covers for:</b>              |
|                                     | Chevy Camaro, Datsun/Nissan, Pontiac    |
|                                     | Firebird, Ford Cougar, Fiat Spider      |

ACCU-FORM PLASTICS • 460 N. 2460 W.