

What is Lynx?

Finding and rectifying common Land Rover electrical faults has never been easier. Britpart have worked closely with Omitec to design and build a highly advanced Land Rover diagnostic tool. As well as the multi-vehicle professional version a single Land Rover model home use version is available too.

The Lynx interface is Windows* based and when running diagnostics on a Windows laptop or Windows tablet, far more information can be displayed to the user than on a hand held device. Being Windows based there is familiarity and flexibility with the interface and navigation is much more intuitive.



Your complete Land Rover diagnostics tool!

What does Lynx do?

- Read fault codes
- Clear fault codes
- Read live data
- Test actuators
- Special functions - see coverage chart
- Programming - such as alarm settings, key fobs etc.
- Service reset

What do you get with Lynx?

- Windows compatible software
- Vehicle Communication Interface box (VCI)
- USB to VCI lead
- VCI to OBD II lead
- Quick start booklet
- Activation form
- Unlock code booklet
- Carry case with foam insert

See overleaf for full Lynx vehicle coverage...

More about Lynx

As Lynx is Windows based, the system is future proofed due to your laptop or Windows tablet hard disk drive which allows for 'many more' numbers of updates compared to hand held devices. Lynx is powered by Omitec who build the T4 - Official Land Rover diagnostics tool. Live data can be displayed using graphics; making it easier to read time based events and the live data can be recorded on the lap top for a comparison, a great advantage over hand held diagnostic tools as they do not usually have storage memory. The Windows based tool allows a simultaneous access to the vehicle diagnostics and consultation of circuit diagrams and other technical information. Allows you to access the internet if you are connected to it whilst diagnosing a vehicle and other such programs you might need to use in a garage environment. Lynx is supplied in a hard wearing carry case with foam insert to protect it when not in use. For the enthusiast home user using Lynx will mean no more trips to your local main dealer to clear any faults on your Land Rover.

What do I need?

Multi-vehicle professional version

Unlocked for all Land Rover vehicle models.

DA6431	English	DA6431ESP	Spanish NEW
DA6431GER	German NEW	DA6431FRA	French NEW

Single vehicle home user version

Unlocked for one Land Rover vehicle model only.

Upgradable for extra Land Rover vehicle models at a later date.

DA6430	English	DA6430ESP	Spanish NEW
DA6430GER	German NEW	DA6430FRA	French NEW
DA6434	Home user additional Land Rover vehicle model unlock code		

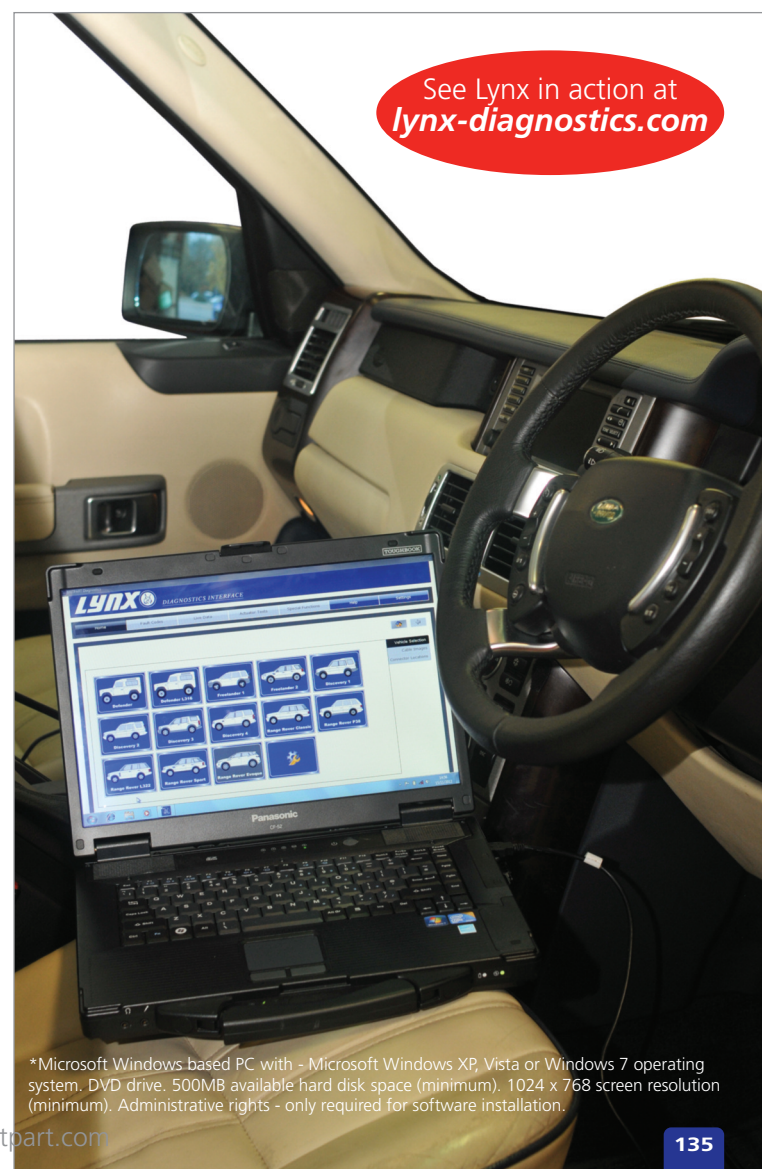
Extras

DA6432	14CUX lead - for use with hot wire V8 Efi vehicles
DA6433	Upgrade lead - power cable for use with firmware updates

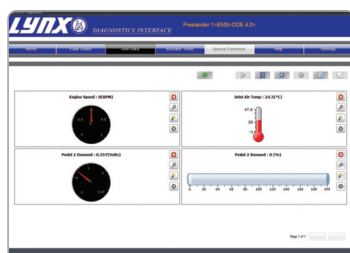


For the workshop and home user...

See Lynx in action at lynx-diagnostics.com



Developed in conjunction with Omitec



View live data with intuitive interface



Unlock codes available for home users



*Microsoft Windows based PC with - Microsoft Windows XP, Vista or Windows 7 operating system. DVD drive. 500MB available hard disk space (minimum). 1024 x 768 screen resolution (minimum). Administrative rights - only required for software installation.

Lynx Vehicle Coverage

Vehicle Model	Years	System	System Name	Read Fault Codes	Clear Fault Codes	Live Data	ECM Data	Actuators	Programming	Maintenance
Defender	1999 - 2007	Diesel EMS	TD5	●	●	●		●	●	
Defender	1994 - 2007	Petrol EMS	14CUX	●	●	●		●		
Defender	1994 - 1995	Petrol EMS	GEMS	●	●	●		●	●	●
Defender	1997 - 1998	Petrol EMS	MEMS 1.9	●	●	●		●		
Defender	1999 - 2007	ABS	WABCO D ABS	●	●	●	●	●		●
Defender	1996 - 2007	Security	10AS			●			●	
Defender	1994 - 2007	Key Programming NEW	10AS						●	
Defender - Puma	2007 -	Diesel EMS	Diesel Engine Management System	●	●	●	●			
Defender - Puma	2007 -	ABS	WABCO D ABS	●	●	●	●	●		●
Defender - Puma	2007 -	Security	10AS			●			●	
Defender - Puma	2007 -	Key Programming NEW	10AS						●	
Freelander 1	1998 - 2001	Diesel EMS	Bosch EDC 1.3.1	●	●	●	●	●		●
Freelander 1	2001 - 2006	Diesel EMS	Bosch DDE4	●	●	●		●		
Freelander 1	1998 - 2001	Petrol EMS	MEMS 1.9	●	●	●		●		
Freelander 1	2001 - 2006	Petrol EMS	MEMS 3	●	●	●	●	●		
Freelander 1	2001 - 2006	Petrol EMS	Siemens EMS2000	●	●	●	●	●		
Freelander 1	2001 - 2006	Petrol EMS	Siemens MS43	●	●	●	●	●		
Freelander 1	1998 - 2006	Transmission	Jatco	●	●	●				
Freelander 1	1998 - 2001	ABS	WABCO D ABS	●	●	●	●	●		●
Freelander 1	2000 - 2001	ABS	TEVES MK20	●	●	●				
Freelander 1	2002 - 2006	ABS	TEVES MK25	●	●	●				
Freelander 1	1998 - 2002	Airbag	Autoliv ACU 4	●	●		●			
Freelander 1	2003 - 2006	Airbag	Siemens SRE Smart	●	●		●			
Freelander 1	1998 - 2001	Security	27VT - CCU			●		●	●	
Freelander 1	2000 - 2002	Security	EWS 3D	●	●	●		●	●	
Freelander 1	1998 - 2006	Key Programming NEW	CCU						●	
Freelander 2	2007 -	Diesel EMS	Diesel Engine Management System	●	●	●	●			
Freelander 2	2007 -	Petrol EMS	Petrol Engine Management System	●	●	●	●			
Freelander 2	2007 -	Transmission	Transmission	●	●	●	●			
Freelander 2	2007 -	ABS	Vehicle Dynamics Control Module	●	●	●	●			
Freelander 2	2007 -	Airbag	Restraints Control Module	●	●		●			●
Freelander 2	2007 -	Service Reset	Service Reset						●	
Freelander 2	2007 -	Security	Body Controller	●	●	●	●			●
Freelander 2	2007 -	Fuel Fired Heater	Fuel Fired Heater	●	●	●	●			
Discovery 1	1996 - 1998	Diesel EMS	Bosch EDC 1.3.1	●	●	●	●	●		●
Discovery 1	1995 - 1998	Petrol EMS	14CUX	●	●	●		●		
Discovery 1	1996 - 1998	Petrol EMS	GEMS	●	●	●		●	●	●
Discovery 1	1993 - 1998	Petrol EMS	MEMS 1.9	●	●	●		●		
Discovery 1	1995 - 1996	ABS	WABCO C ABS	●	●	●		●		
Discovery 1	1996 - 1998	Airbag	TRW SPS	●	●		●			
Discovery 1	1996 - 1998	Security	10AS			●			●	
Discovery 1	1993 - 1998	Key Programming NEW	10AS						●	
Discovery 2	1998 - 2005	Diesel EMS	TD5	●	●	●		●	●	
Discovery 2	1998 - 2005	Petrol EMS	Bosch M5.2.1	●	●	●	●	●		●
Discovery 2	1998 - 2005	Transmission	G5 8.87.x	●	●	●	●		●	●
Discovery 2	1998 - 2005	ABS	WABCO D ABS/SLABS	●	●	●	●	●	●	●
Discovery 2	1998 - 2005	Airbag	TRW Generation 4	●	●		●			
Discovery 2	1998 - 2005	Security	Valeo BCU			●		●	●	
Discovery 2	1998 - 2005	Key Programming NEW	BCU						●	
Discovery 2	1998 - 2005	Chassis	ACE - Suspension	●	●	●	●	●	●	
Discovery 2	1998 - 2005	Chassis	WABCO D ABS/SLABS - Suspension	●	●	●	●	●		●
Discovery 3	2005 - 2009	Diesel EMS	Diesel Engine Management System	●	●	●	●			
Discovery 3	2005 - 2009	Petrol EMS	Petrol Engine Management System	●	●	●	●			
Discovery 3	2005 - 2009	Transmission	Transmission	●	●	●	●			
Discovery 3	2005 - 2009	ABS	Vehicle Dynamics Control Module	●	●	●	●			
Discovery 3	2005 - 2009	Airbag	Restraints Control Module	●	●		●			
Discovery 3	2005 - 2009	Climate Control	Heating, Ventilation & Air Conditioning	●	●		●			
Discovery 3	2005 - 2009	EPB	Park Brake Module	●	●	●	●	●		
Discovery 3	2005 - 2009	Service Reset	Service Reset						●	
Discovery 3	2005 - 2009	Steering Angle	Steering Angle	●	●		●			●
Discovery 3	2005 - 2009	Security	Body Controller	●	●	●	●			
Discovery 3	2005 - 2009	Chassis	Ride Level Control Module	●	●	●	●	●		
Discovery 3	2005 - 2009	Fuel Fired Heater	Fuel Fired Heater	●	●	●	●			

Lynx Vehicle Coverage - continued

Vehicle Model	Years	System	System Name	Read Fault Codes	Clear Fault Codes	Live Data	ECM Data	Actuators	Programming	Maintenance
Discovery 4	2010 -	Diesel EMS	Diesel Engine Management System	●	●	●	●			
Discovery 4	2010 -	Petrol EMS	Petrol Engine Management System	●	●	●	●			
Discovery 4	2010 -	Transmission	ZF HP26	●	●	●	●			
Discovery 4	2010 -	Transmission	ZF HP28	●	●	●	●			
Discovery 4	2010 -	ABS	Vehicle Dynamics Control Module	●	●	●	●			
Discovery 4	2010 -	Airbag	Restraints Control Module	●	●		●			
Discovery 4	2010 -	Climate Control	Heating, Ventilation & Air Conditioning	●	●		●			
Discovery 4	2010 -	EPB	Park Brake Module	●	●	●	●	●		
Discovery 4	2010 -	Body Electrics	Body Electrics	●	●	●	●			
Discovery 4	2010 -	Service Reset	Service Reset						●	
Discovery 4	2010 -	Immobiliser (Steering Lock)	Vehicle Immobiliser Module	●	●		●			
Discovery 4	2010 -	Chassis	Ride Level Control Module	●	●	●	●			
Discovery 4	2010 -	Fuel Fired Heater	Fuel Fired Heater	●	●	●	●			
Discovery 4	2010 -	HSCAN Clear DTCs	High Speed CAN Clear DTCs		●					
Discovery 4	2010 -	MSCAN Clear DTCs	Medium Speed CAN Clear DTCs		●					
Range Rover Classic	1990 - 1995	Petrol EMS	14CUX	●	●	●		●		
Range Rover P38	1995 - 2002	Diesel EMS	Bosch EDC 1.3.1	●	●	●	●	●		●
Range Rover P38	1999 - 2002	Petrol EMS	Bosch M5.2.1	●	●	●	●	●		●
Range Rover P38	1995 - 1999	Petrol EMS	GEMS	●	●	●		●	●	●
Range Rover P38	1998 - 2002	Transmission	GS 2.38	●	●	●	●			
Range Rover P38	1998 - 2002	Transmission	GS 8.87.x	●	●	●	●		●	●
Range Rover P38	1995 - 1999	ABS	WABCO C ABS	●	●	●		●		
Range Rover P38	1999 - 2002	ABS	WABCO D ABS	●	●	●	●	●		
Range Rover P38	1998 - 2002	Airbag	TRW SPS	●	●		●			
Range Rover P38	1998 - 2002	Climate Control	HVAC	●	●					
Range Rover P38	1995 - 2002	Air Suspension	Air Suspension	●	●	●		●	●	
Range Rover P38	1995 - 2002	Body Electrics	BeCM	●	●	●		●	●	●
Range Rover Sport	2006 - 2009	Diesel EMS	Diesel Engine Management System	●	●	●	●			
Range Rover Sport	2006 - 2009	Petrol EMS	Petrol Engine Management System	●	●	●	●			
Range Rover Sport	2006 - 2009	Transmission	Transmission	●	●	●	●			
Range Rover Sport	2006 - 2009	ABS	Vehicle Dynamics Control Module	●	●	●	●			
Range Rover Sport	2006 - 2009	Airbag	Restraints Control Module	●	●		●			
Range Rover Sport	2006 - 2009	Climate Control	Heating, Ventilation & Air Conditioning	●	●		●			
Range Rover Sport	2006 - 2009	EPB	Park Brake Module	●	●	●	●	●		
Range Rover Sport	2006 - 2009	Service Reset	Service Reset						●	
Range Rover Sport	2006 - 2009	Steering Angle	Steering Angle	●	●		●			●
Range Rover Sport	2006 - 2009	Security	Body Controller	●	●	●	●			
Range Rover Sport	2006 - 2009	Chassis	Ride Level Control Module	●	●	●	●	●		
Range Rover Sport	2006 - 2009	Fuel Fired Heater	Fuel Fired Heater	●	●	●	●			
Range Rover Sport	2010 - 2013	Diesel EMS	Diesel Engine Management System	●	●	●	●			
Range Rover Sport	2010 - 2013	Petrol EMS	Petrol Engine Management System	●	●	●	●			
Range Rover Sport	2010 - 2013	Transmission	Transmission	●	●	●	●			
Range Rover Sport	2010 - 2013	ABS	Vehicle Dynamics Control Module	●	●	●	●			
Range Rover Sport	2010 - 2013	Airbag	Restraints Control Module	●	●		●			
Range Rover Sport	2010 - 2013	Climate Control	Heating, Ventilation & Air Conditioning	●	●		●			
Range Rover Sport	2010 - 2013	EPB	Park Brake Module	●	●	●	●	●		
Range Rover Sport	2010 - 2013	Body Electrics	Body Electrics	●	●	●	●			
Range Rover Sport	2010 - 2013	Service Reset	Service Reset						●	
Range Rover Sport	2010 - 2013	Immobiliser (Steering Lock)	Vehicle Immobiliser Module	●						
Range Rover Sport	2010 - 2013	Immobiliser (Steering Lock)	Vehicle Immobiliser Module	●	●		●			
Range Rover Sport	2010 - 2013	Immobiliser (Steering Lock)	Vehicle Immobiliser Module	●	●		●			
Range Rover Sport	2010 - 2013	Chassis	Ride Level Control Module	●	●	●	●			
Range Rover Sport	2010 - 2013	Fuel Fired Heater	Fuel Fired Heater	●	●	●	●			
Range Rover Sport	2010 - 2013	HSCAN Clear DTCs	High Speed CAN Clear DTCs		●					
Range Rover Sport	2010 - 2013	MSCAN Clear DTCs	Medium Speed CAN Clear DTCs		●					

Range Rover L322 coverage overleaf...

Lynx Vehicle Coverage - continued

Vehicle Model	Years	System	System Name	Read Fault Codes	Clear Fault Codes	Live Data	ECM Data	Actuators	Programming	Maintenance
Range Rover L322	2002 - 2005	Diesel EMS	Bosch DDE4	●	●	●		●		
Range Rover L322	2002 - 2005	Petrol EMS	Bosch ME7.2	●	●	●	●	●		
Range Rover L322	2002 - 2005	Transmission	GM5 / EGS 20	●	●	●	●	●		
Range Rover L322	2002 - 2005	Transmission	ZF / EGS 8602	●	●	●	●	●		
Range Rover L322	2002 - 2005	ABS	Bosch 5.7	●	●					
Range Rover L322	2002 - 2005	Climate Control	HVAC	●	●					
Range Rover L322	2002 - 2005	Body Electrics	GM3	●	●	●	●			
Range Rover L322	2002 - 2005	Service Reset	Service Reset						●	
Range Rover L322	2002 - 2005	Steering Angle	Steering Angle	●	●					●
Range Rover L322	2002 - 2005	Security	EWS3	●	●	●	●			
Range Rover L322	2002 - 2005	Air Suspension	EHC2	●	●	●	●	●	●	
Range Rover L322	2002 - 2005	Fuel Fired Heater	Fuel Fired Heater	●	●	●	●			
Range Rover L322	2006	Diesel EMS	Bosch DDE4	●	●	●		●		
Range Rover L322	2006	Petrol EMS	Denso PAN PAG	●	●	●	●			
Range Rover L322	2006	Transmission	GM5 / EGS 20	●	●	●	●	●		
Range Rover L322	2006	Transmission	Transmission	●	●	●	●			
Range Rover L322	2006	ABS	Bosch 5.7	●	●					
Range Rover L322	2006	ABS	Bosch 8	●	●	●	●			
Range Rover L322	2006	Airbag	MRS 4	●	●		●			
Range Rover L322	2006	Climate Control	HVAC	●	●					
Range Rover L322	2006	Service Reset	Service Reset						●	
Range Rover L322	2006	Body Electrics	GM3	●	●	●	●			
Range Rover L322	2006	Security	Body Controller	●	●		●			
Range Rover L322	2006	Air Suspension	Ride Level Control Module	●	●	●	●	●		
Range Rover L322	2006	Fuel Fired Heater	Fuel Fired Heater	●	●	●	●			
Range Rover L322	2007 - 2009	Diesel EMS	Siemens SID 203	●	●	●	●			●
Range Rover L322	2007 - 2009	Petrol EMS	Denso PAN PAG	●	●	●	●			
Range Rover L322	2007 - 2009	Transmission	Transmission	●	●	●	●			
Range Rover L322	2007 - 2009	ABS	Bosch 8	●	●	●	●			
Range Rover L322	2007 - 2009	Airbag	Restraints Control Module	●	●		●			
Range Rover L322	2007 - 2009	Climate Control	HVAC	●	●					
Range Rover L322	2007 - 2009	EPB	Park Brake Module	●	●	●	●	●		
Range Rover L322	2007 - 2009	Service Reset	Service Reset						●	
Range Rover L322	2007 - 2009	Steering Angle	Steering Angle	●	●					●
Range Rover L322	2007 - 2009	Body Electrics	GM3	●	●	●	●			
Range Rover L322	2007 - 2009	Security	Vehicle Immobiliser Module	●	●		●			
Range Rover L322	2007 - 2009	Chassis	Ride Level Control Module	●	●	●	●	●		
Range Rover L322	2007 - 2009	Fuel Fired Heater	Fuel Fired Heater	●	●	●	●			
Range Rover L322	2010 - 2012	Diesel EMS	Diesel Engine Management System	●	●	●	●			
Range Rover L322	2010 - 2012	Petrol EMS	Petrol Engine Management System	●	●	●	●			
Range Rover L322	2010 - 2012	Transmission	Transmission	●	●	●	●			
Range Rover L322	2010 - 2012	ABS	Vehicle Dynamics Control Module	●	●	●	●			
Range Rover L322	2010 - 2012	Airbag	Restraints Control Module	●	●		●			
Range Rover L322	2010 - 2012	Climate Control	Heating, Ventilation & Air Conditioning	●	●		●			
Range Rover L322	2010 - 2012	EPB	Park Brake Module	●	●	●	●	●		
Range Rover L322	2010 - 2012	Steering Angle	Steering Angle	●	●		●			
Range Rover L322	2010 - 2012	Body Electrics	Body Electrics	●	●	●	●			
Range Rover L322	2010 - 2012	Chassis	Ride Level Control Module	●	●	●	●			
Range Rover L322	2010 - 2012	Fuel-Fired Heater	Fuel Fired Heater	●	●	●	●			
Range Rover L322	2010 - 2012	Immobiliser (Steering Lock)	Vehicle Immobiliser Module	●	●		●			
Range Rover L322	2010 - 2012	HSCAN Clear DTCs	High Speed CAN Clear DTCs		●					
Range Rover L322	2010 - 2012	MSCAN Clear DTCs	Medium Speed CAN Clear DTCs		●					